

ImageCenter™ LE

A stand-alone image management tool for Actiphy's ActiImage Protector™

What is ImageCenter™ LE?

ImageCenter™ LE is a stand-alone image management tool for Actiphy's ActiImage Protector™.

ActiImage Protector™ provides Post-backup Process feature including Consolidation of incremental image files, Off-site Replication, and BootCheck™. However, those processes performed on the backup source machine will increase resource demand on the source machine. With ImageCenter™ LE, replication of backup image files to local or off-site high-capacity data stores can be scheduled, and automatically run the scheduled Replication task as well as Consolidation of incremental files, BootCheck™, Verify tasks. All of these can be offloaded to a dedicated system, greatly reducing resource demands on the source machine.

Main Features of ImageCenter™ LE

- Centralized Image Management tool for ActiImage Protector™ backup image files.
- Consolidation of image files, Off-site Replication and BootCheck™ tasks are offloaded to a dedicated system greatly reducing resource demands on the source machine.
- Consolidation task can be performed immediately or when a specified number of incremental files have been created or scheduled at a specified time (on monthly / weekly basis).
- You can select replication targets from Local Storage, Network Shared Folder, FTP, FTPS, SFTP, WebDAV, Amazon S3 (including Cloudian, Amazon S3-compatible storage), Azure Storage, OneDrive, Google Drive, Dropbox.
- Control traffic by suspending / resuming replication tasks. This allows you to pause long-running replication tasks to reduce traffic if you have jobs to prioritize.
- ImageCenter™ LE includes BootCheck™ to ensure the backup image file is bootable. BootCheck™ provides confidence that your backup images are bootable on local or remote Hyper-V host. BootCheck™ boots up a virtual machine directly from a backup image file for quick bootability check, minimizing the resource consumption and startup time.
- Image files can be managed by folder, so it is easy to add image file for configuring a task.
- The backup image files created by ActiImage Protector™'s HyperAgent™, agentless backup feature, are supported.

Main Window

• Agent List:

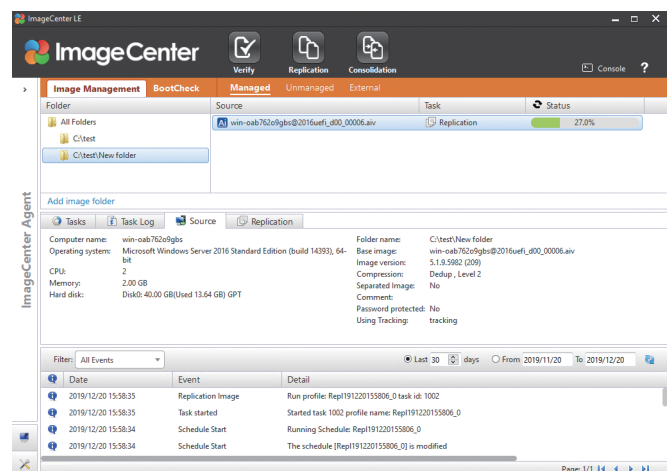
A list view of the connected / connectable agents is provided on console.

• Image List:

A list view of the image files managed by the connected agents is provided.

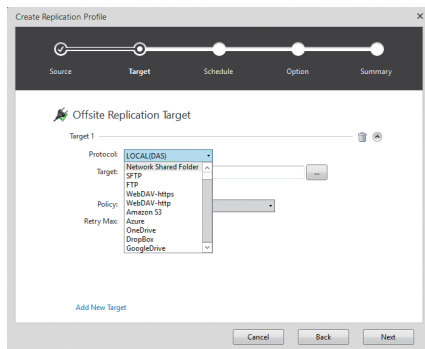
• Dashboard:

Provides real time monitoring of log information and the status of backup images selected in the image list.



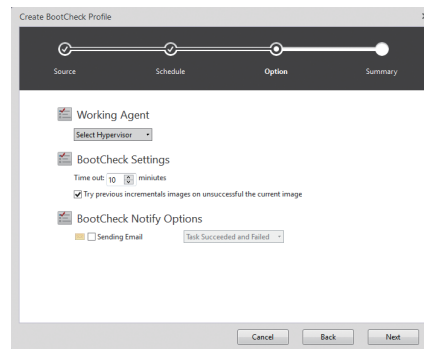
Screen Example

Create Replication Profile wizard



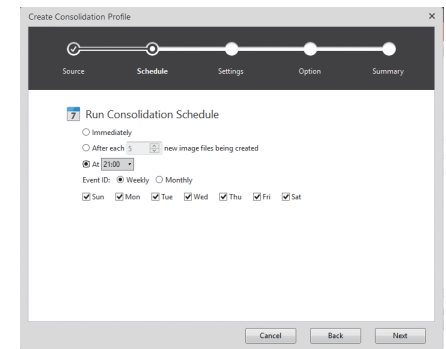
You can select replication targets from local storage, network shared folder, FTP, FTPS, SFTP, WebDAV, Amazon S3 including Cloudian (Amazon S3-compatible storage), Azure Storage, OneDrive, Google Drive or Dropbox.

Create BootCheck™ Profile wizard



Quickly ensure that backup images can successfully boot as virtual machines on local or remote Hyper-V.

Create Consolidation Profile wizard



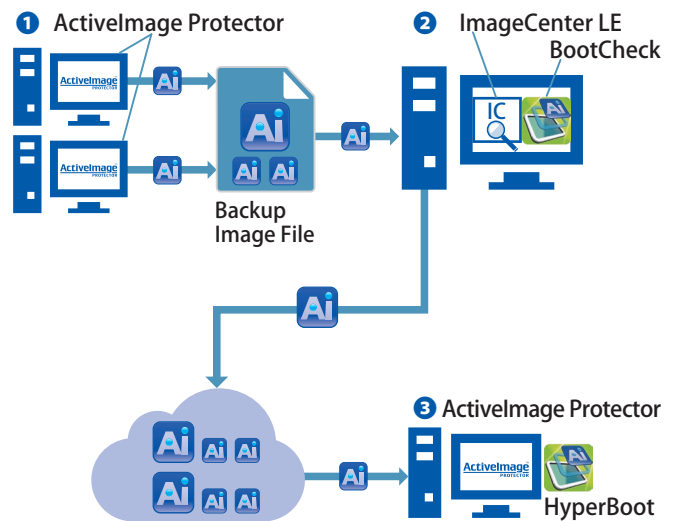
Configure the schedule setting for Consolidation profile.

ImageCenter™ LE Case Scenario

Local Backup → Off-site Replication~Physical Environments~

- 1 Activelmage Protector™ is installed on two servers and is saving backup image files locally.
- 2 ImageCenter™, installed on another server, automatically runs scheduled consolidation and replication tasks replicating the backup image files to network storage, cloud storage, etc. These tasks automatically run according to the predefined schedules and are offloaded to the dedicated system, greatly reducing resource demands on the source machine. Use BootCheck™, built in ImageCenter™ LE, for immediately ensuring that the backup images are bootable, bypassing lengthy restore process.
- 3 Off-site Replication replicates backup image files in cloud storage to a remote storage to restore. HyperBoot™ (*) provides disaster/recovery solution by immediately booting up the replicated backup images as virtual machines.

* HyperBoot™, Actiphys proprietary free standalone software add-on, can boot any Activelmage Protector™ backup image as a virtual machine in minutes.



ImageCenter™ LE is a free download add-on for Activelmage Protector™.



Actiphys, Inc. NCO Kanda-kon'yacho Building, 8 Kanda-kon'yacho, Chiyoda-ku, Tokyo 101-0035, Japan
 Phone:+81-3-5256-0877 FAX:+81-3-5256-0878 <https://www.actiphys.com> global-sales@actiphys.com